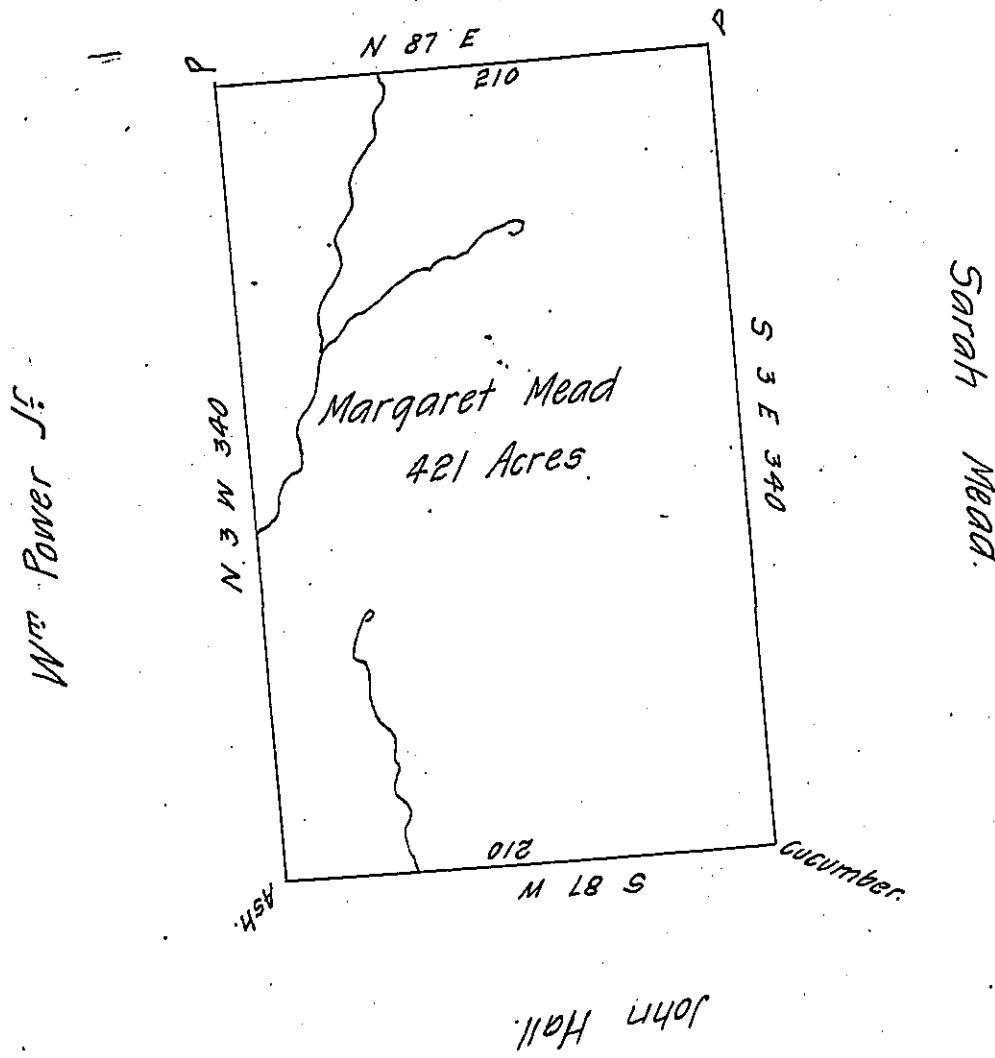


Donation Land.



Situate on the Waters of Sandy Creek in district N^o 3
 Allegany County, containing four hundred twenty one Acres and
 allowance Survey'd 24th May 1798 in pursuance of a Warrant
 granted Margaret Mead 8th June 1796.

Ben Stokely D. S.

Danl. Brodhead Esq. S. G.

IN TESTIMONY that the above is a copy of the original remaining on file in
 the Department of Internal Affairs of Pennsylvania, made
 conformably to an Act of Assembly approved the 16th day of
 February, 1833, I have hereunto set my Hand and caused
 the Seal of said Department to be affixed at Harrisburg,
 this sixth day of January 1906

George R. Brown
 Secretary of Internal Affairs.